

boben mathews mammen

MINDSET SERIES

2008



Mindset

by Boben M. Mammen

Acrylic on board – (Size 17” x 40”)

Inspired by The Analysis of Mind, Bertrand Russell’s 1921 philosophical masterpiece, Mindset is the first work in a series of twenty that represents a contemporary journey of psychological exploration. The sense of disquiet in Mindset conveys the artist’s apprehension upon confronting the multifarious nature of human thought and its connections with our ever-changing world.



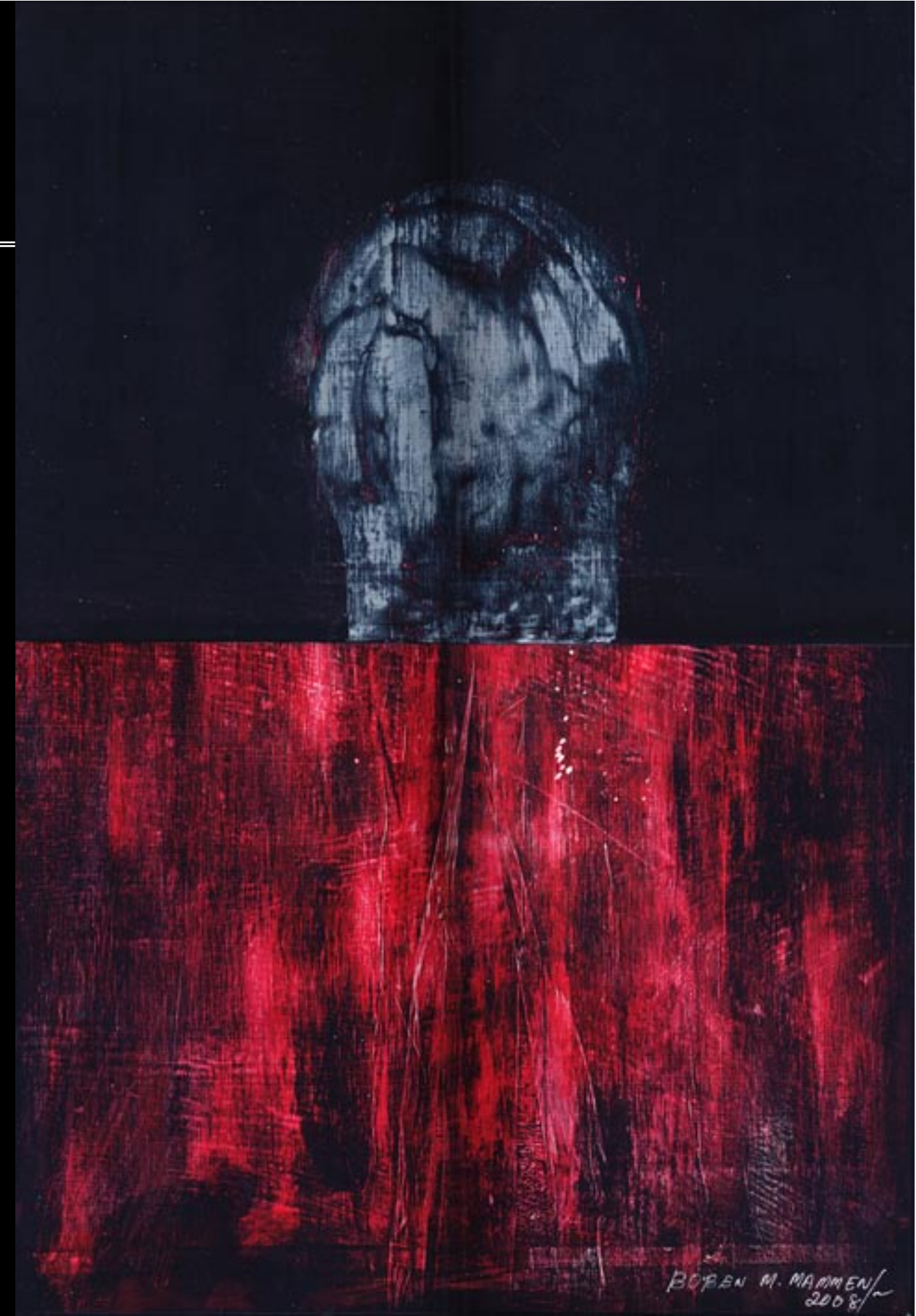


The Analysis of Mind

by Boben M. Mammen

Acrylic on board – (Size 14" x 18")

The Analysis of Mind is the fountainhead in the artist's Mindset series. The artist explores the concept of mind both from the point of introspection and of external analysis of observable behaviour. The Analysis of Mind conveys the labyrinthine depths of meaning that reveal so much about human nature, yet are routinely ignored unseen due to apathy and self-indulgence.





Prison of Uncertainty

by Boben M. Mammen

Acrylic on board – (Size 25" x 25")

With Prison of Uncertainty, the artist draws on his own difficult experience of leaving a successful career in India and Bahrain to fulfill his dreams in Australia. The work is also a broader portrayal of the social anxiety caused by recent national and world events: unemployment, financial turmoil, natural disasters and tenuous security all collaborating to insidiously impound our confidence and create misgiving.



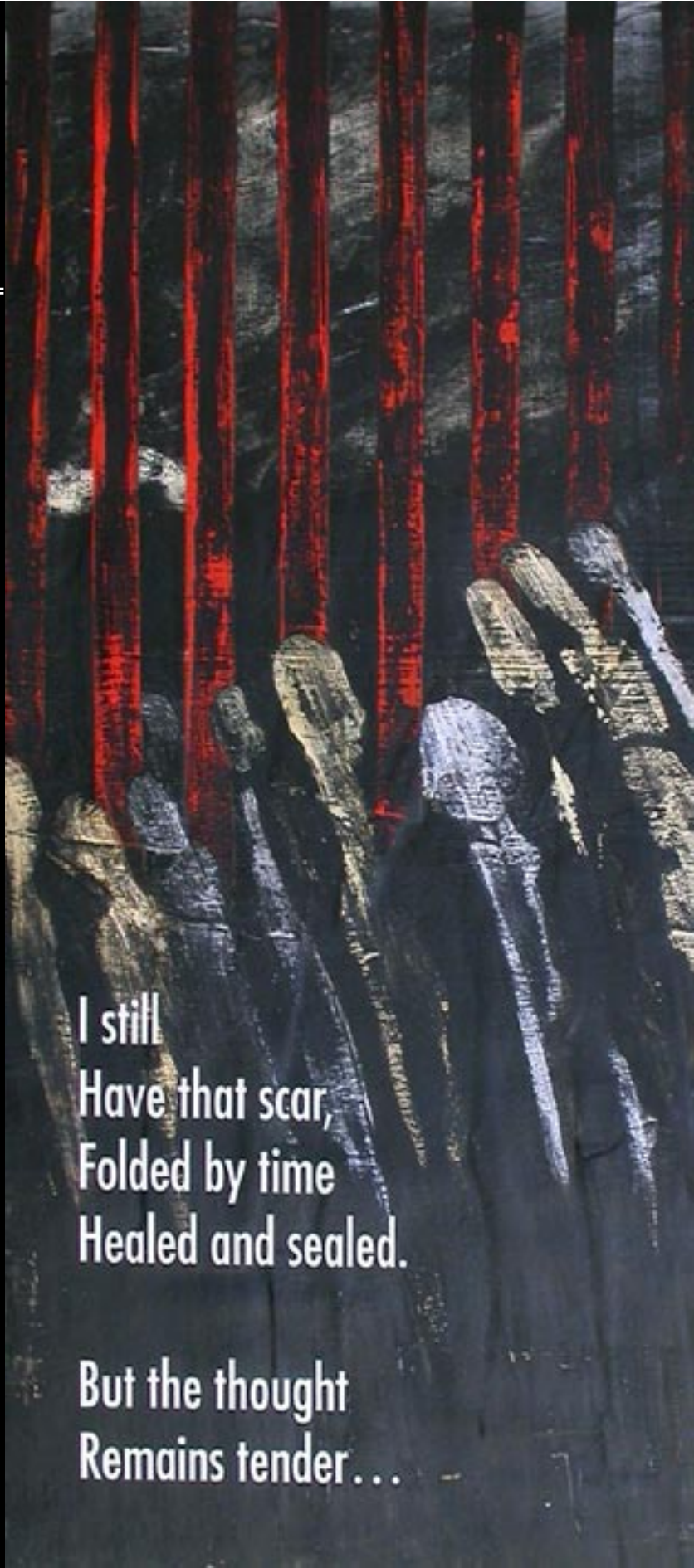


Scar

by Boben M. Mammen

Acrylic on board – (Size 17" x 40")

Scar presents each individual's personal history as a formidable opponent to the divinity of forgiveness. Only the power of absolution can begin to erase the dark shadows of experience that disfigure our hearts and deface our thoughts.



I still
Have that scar,
Folded by time
Healed and sealed.

But the thought
Remains tender...



Fear

by Boben M. Mammen

Acrylic on board – (Size 14" x 18")

"Fear is the main source of superstition, and one of the main sources of cruelty. To conquer fear is the beginning of wisdom" (Bertrand Russell, Analysis of Mind: 1921). This work illustrates the destructive effect that fear, in all its perverse forms, has on the individual mindset and the natural movements of the human form.



BOBEN M. MAMMEN
2008



Reminiscences

by Boben M. Mammen

Acrylic on board – (Size 14" x 18")

Celebrating the pleasures of solitude, *Reminiscences* was created from the artist's experiences of self-discovery in a new country. Through a process of building a 'nest' lined with memories from his past, the artist has created a work – and a life – that marries the perils of loneliness with the triumph of self-fulfillment.



State of Mind,
Let it take you
Back to
forgotten.
quiet
places...

BOBEN M. MAMMEN /
2008



Mask

by Boben M. Mammen

Acrylic on board – (Size 14” x 18”)

The fantastical desire to strip society and its individuals of the superficial masks lies at the heart of this work: a dream of a world free from conflict, racism, injustice, poverty and greed. The masks we don as individuals and societies reveal as much about us as they conceal.



BOBEN M. MAMMEN /
2008



Experience

by Boben M. Mammen

Acrylic and Ink on Plywood

(Size 14" x 18")

Experience is a reference to the problematical and paradoxical nature of creativity and commerciality; a respectful tribute to those that dedicate their mindset to creation and resist the corruptive forces of the mercantile.





Hidden

by Boben M. Mammen

Acrylic on Plywood - (Size 14" x 14")

The search for the true self is the motivation behind Hidden, a reflection of the many layers with which we shield and recreate ourselves for social presentation. The work reveals the challenge of interpreting human behaviour and communication in order to discover what constitutes the integral core of each individual.





Believes

by Boben M. Mammen

Acrylic on Plywood - (Size 14" x 14")

Profoundly moved by his experiences in the Middle East, the artist created Believes as a reflection on the powerful impact that political, spiritual and religious beliefs can make on an individual mindset. From the richness of a simple conversation with a new friend in a marketplace to witnessing strangers enjoying gruesome evidence of a beheading, the artist has been exposed to the extremes of human behaviour, each directly shaped by the doctrines of belief systems.



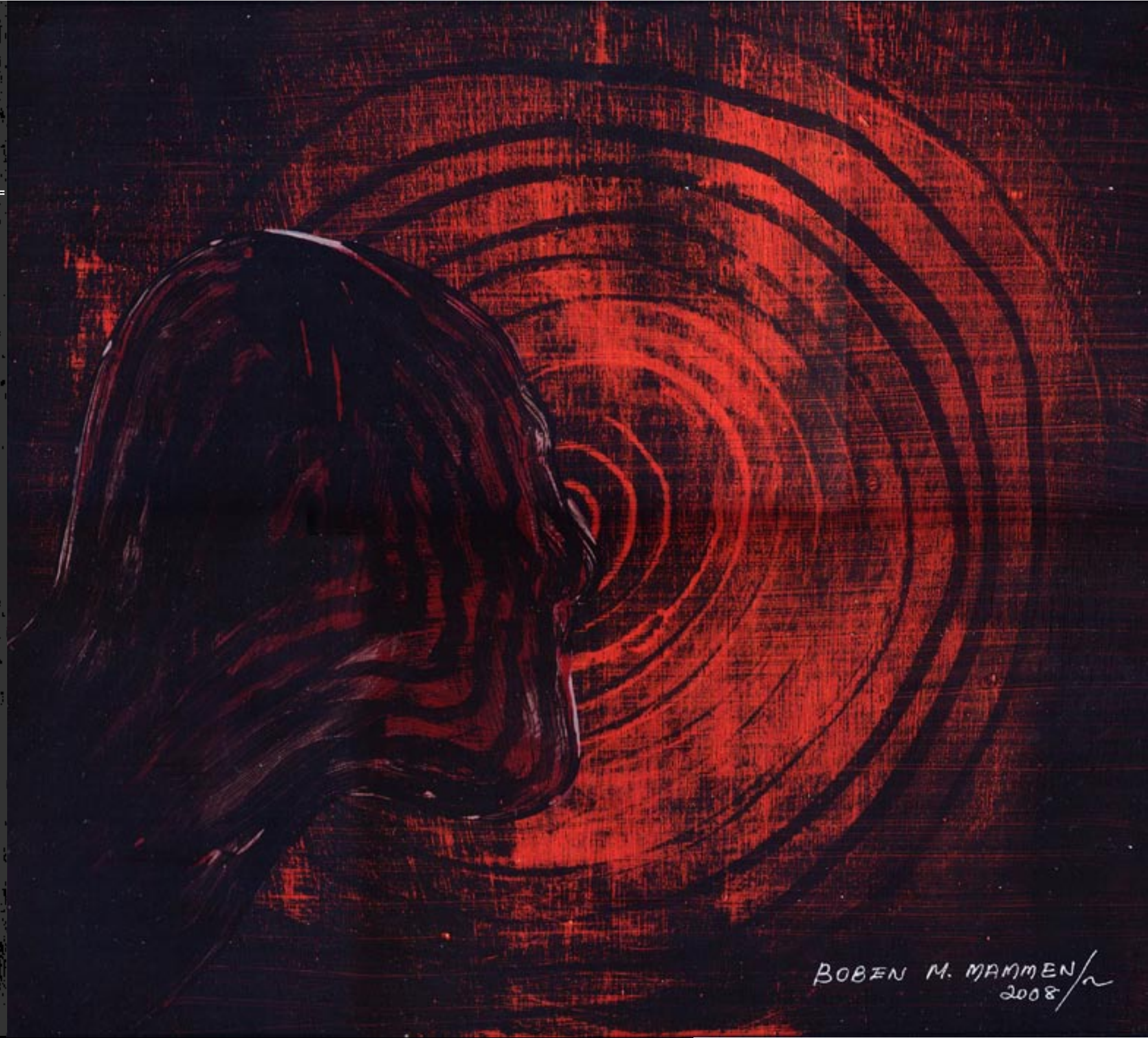


Isolation

by Boben M. Mammen

Acrylic on Plywood - (Size 14" x 14")

The isolating properties of human's mindset can present dangerous repercussions. Isolation depicts the pitfalls that await individuals who force their own personal philosophies on others. The importance of respect for the rights of each individual to possess their own beliefs and mindsets drives this particular work.



BOBEN M. MAMMEN / ~
2008



Society

by Boben M. Mammen

Acrylic on Plywood - (Size 14" x 14")

Does Society have the power to influence individuals to form a collective mindset? This is just one of the questions posed by Society. Born from the artist's experience of blending the cultural beliefs and views of his Indian homeland with those of multicultural Australia, Society represents the ideal a universal mindset devoid of barriers.



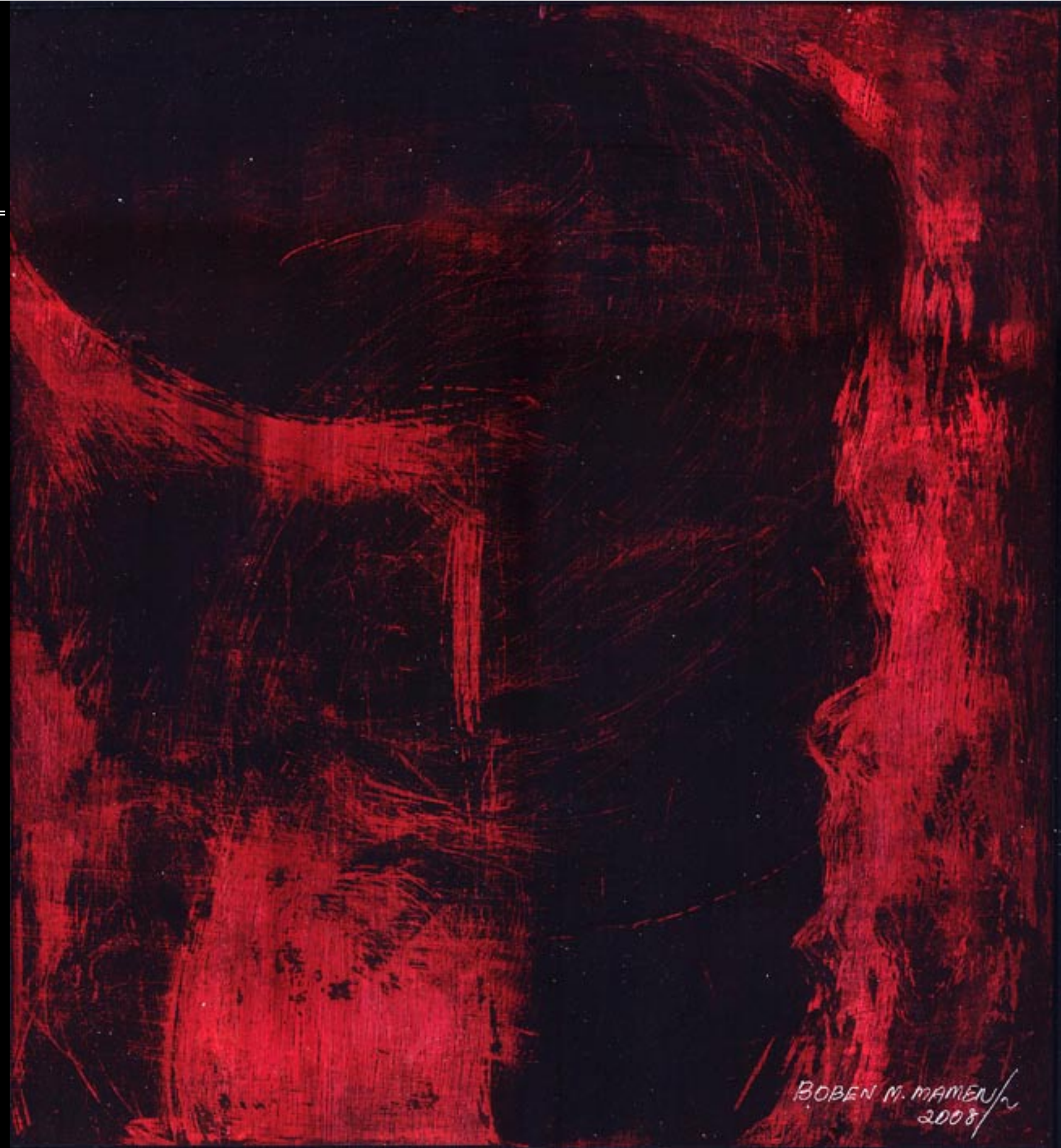


Relationship

by Boben M. Mammen

Acrylic on Plywood - (Size 14" x 14")

Relationship represents the great significance that close relationships have on individual mindsets. The positive contributions of a close partnership can be startlingly stripped if the relationship becomes strained, just as the disclosure of the most intimate contents of individual's mindsets within a relationship can also present the most dramatic of consequences.





God's Perspective

by Boben M. Mammen

Acrylic on Plywood - (Size 14" x 14")

Raised in a Christian family, the support, security and freedom which the artist educes from his faith are reflected in God's Perspective. This work features the human skull at the centre of the piece as seen from a bird's eye view.





Relative Strangers

by Boben M. Mammen

Ink Drawings and Stumping on Paper

(Size 50 cm x 70 cm)

A tribute to the vast network of friends the artist accumulated on his travels, Relative Strangers is a reminder of the hidden connectivity we all share, despite the barriers of geography, race, language, politics and religion.





Billion Subjects

by Boben M. Mammen

Ink Drawings and Stumping on Paper

(Size 25 cm x 50 cm)

Inspired by the interrelation of mind and movement, Billion Subjects reflects the miraculous and fascinating singularity of the individual. The smaller format provides the artist tremendous visual depth and the opportunity to capture the gamut of emotions that define us as independent mindsets.



Boben M. Mammen

BOBEN M. MAMMEN
2008

boben mathews mammen

MINDSET SERIES

2008